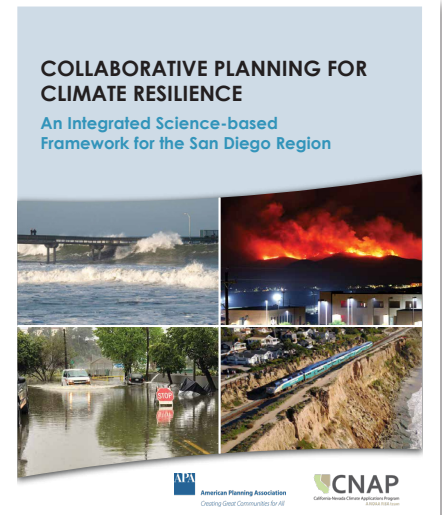


COLLABORATIVE PLANNING FOR CLIMATE RESILIENCE

FACT SHEET

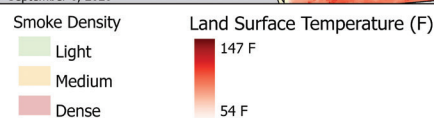
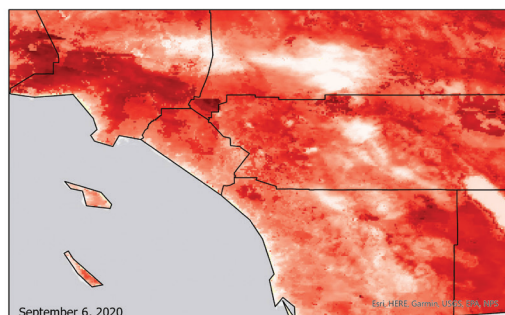
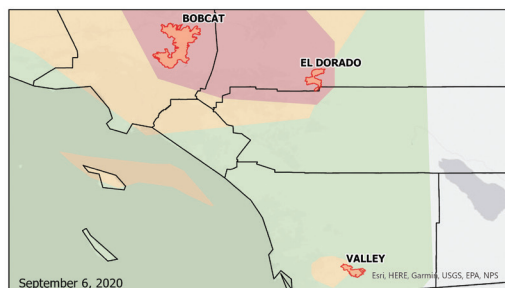
A team of experts representing the American Planning Association (APA), Scripps Institution of Oceanography at UC San Diego, and San Diego State University have released a new report, entitled *Collaborative Planning for Climate Resilience*. The report evaluates the varied set of climate-related hazards and the array of local and regional planning bodies in the San Diego region. To strengthen the region's resilience to growing climate change impacts, the report recommends a planning framework for improved coordination among public agencies, research institutions, non-governmental organizations, and other stakeholders—one that can be replicated in other regions. Integrating climate justice in resilience planning is emphasized throughout this framework, recognizing needs of disadvantaged communities that are particularly susceptible to climate change impacts.



AMONG THE KEY FINDINGS:

The San Diego region is susceptible to a host of threats to its quality of life and the natural environment because of climate change.

- Climate projections indicate continued warming, sea level rise, and changing precipitation. Of particular concern is when extreme weather occurs on top of longer term changes, producing heat waves, floods, and severe wildfire risk. The region must cope with increased likelihood of compound impacts when extreme events co-occur or happen sequentially exacerbating the impacts.
- Preparation for widespread impacts must consider the San Diego region's infrastructure, natural resources, coastal resources, and public health and safety. Especially urgent is to develop support for disadvantaged communities that may be disproportionately affected and particularly vulnerable.



By adopting a framework that integrates existing regional planning efforts and local government general plans, public agencies in the region can build stronger resilience to climate change impacts.

- For example, the County of San Diego is already updating its *Multi-jurisdictional Hazard Mitigation Plan* and is creating a new Climate Change and Public Health Plan. These plans will identify specific adaptation strategies and actions that can be implemented throughout the region through updates to local General Plan Safety Elements and Environmental Justice Elements.

Similarly, the San Diego Integrated Regional Water Management (IRWM) program is supporting projects that build more secure water resources in the region, and the San Diego Association of Governments (SANDAG) draft 2021 Regional Plan addresses climate change impacts on transportation and other critical infrastructure. Implementation of these plans will require ongoing collaboration with local jurisdictions.

- These regional and local planning efforts can address needs, and help to end discriminatory practices affecting disadvantaged communities, including communities of color, low-income communities, tribal communities, and certain rural areas in the region.
- Although climate adaptation and resilience planning is already underway in San Diego, the threats associated with climate change make it increasingly important. The region has a knowledgeable and engaged set of scientists, planners, practitioners, and community representatives to achieve robust planning processes.
- A cross-jurisdictional, interdisciplinary approach leads to cost-effective strategies and actions that can be implemented in a climate-smart and timely manner. Groups such as the Climate Science Alliance, Connecting Wildlands and Communities, the San Diego Regional Climate Collaborative, and SANDAG already are working with local governments on strategies to protect communities and conserve natural resources. Strong partnerships with state, federal, tribal, and cross-border entities also are needed.

Proposed Framework Table			
Focus Areas			
INFRASTRUCTURE	NATURAL RESOURCES	COASTAL RESOURCES	PUBLIC HEALTH & SAFETY
Regional & Subregional Plans			
SANDAG Regional Plan	San Diego County Urban Water Management Plan San Diego Basin Plan and subregional Water Quality Improvement Plans MSCP Subregional Habitat Conservation Plans		San Diego County Multijurisdictional Hazard Mitigation Plan San Diego County Regional Public Health and Climate Adaptation Plan
Local Plans			
Environmental Justice Element	Environmental Justice Element	Environmental Justice Element	Environmental Justice Element
<i>Circulation Element</i>	<i>Open Space Element</i>	Local Coastal Program and related General Plan Elements	Safety Element
<i>Land Use Element</i>	<i>Conservation Element</i>		<i>Circulation Element</i>
<i>Housing Element</i>			<i>Land Use Element</i>
			<i>Housing Element</i>
			Local Government Hazard Mitigation Plan
*The plans in italics are very likely general plan elements that will integrate information from the regional and subregional plans listed above.			

ENVIRONMENTAL JUSTICE AND EQUITY
Plans Requiring Climate Analysis

Regional & Subregional Plans that directly support elements of general plans and other local plans. Use Regional plans to more readily incorporate climate adaptations into Local Plans

The report is a joint product of APA's Regional and Intergovernmental Planning Division (RIPD) and the California-Nevada Climate Applications Program (CNAP), a NOAA Program, based at Scripps Oceanography. Co-lead authors are Robert Leiter, FAICP, and Cary Lowe, Ph.D., AICP, on behalf of APA, and Julie Kalansky, Ph.D., on behalf of Scripps. A team of nine other planning and scientific experts contributed to the report, along with twenty-four external reviewers.